



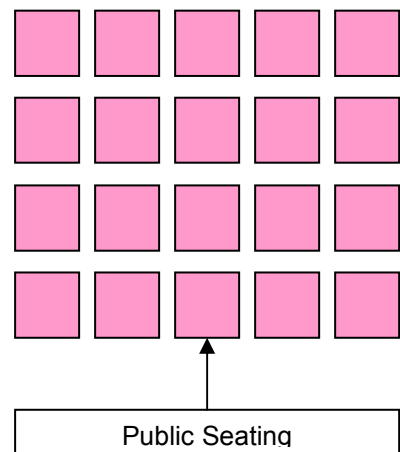
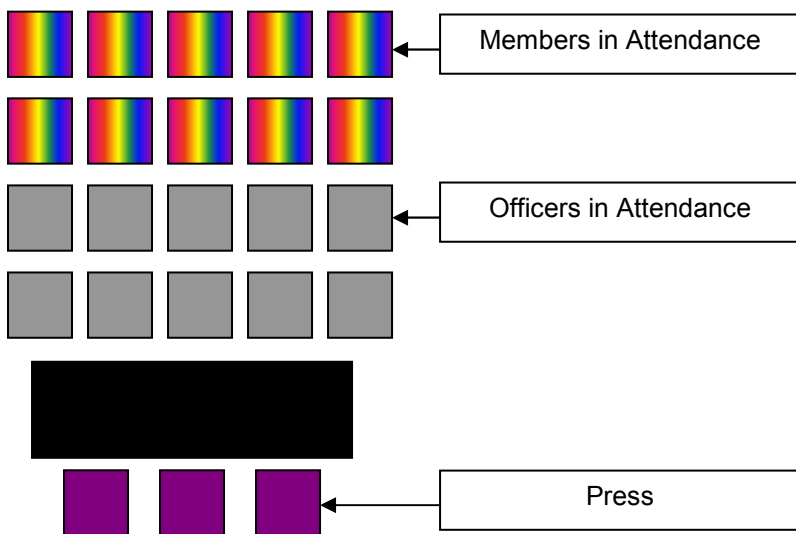
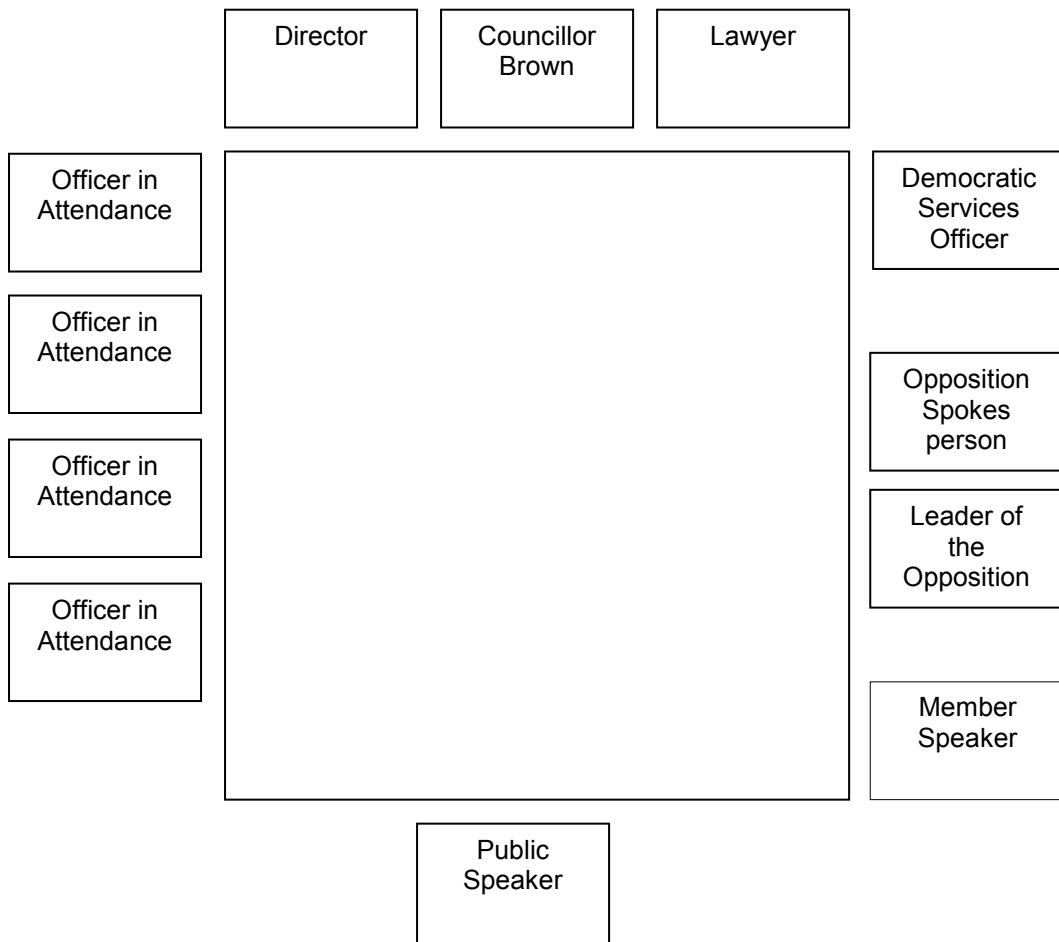
**Brighton & Hove
City Council**

Cabinet Member Meeting

Title:	Children & Young People Cabinet Member Meeting
Date:	19 January 2009
Time:	4.00pm
Venue	Committee Room 3, Hove Town Hall
Members:	Councillor: Mrs Brown (Cabinet Member)
Contact:	Nara Miranda Democratic Services Officer 01273 291004 (voicemail only) nara.miranda@brighton-hove.gov.uk

	The Town Hall has facilities for wheelchair users, including lifts and toilets
	An Induction loop operates to enhance sound for anyone wearing a hearing aid or using a transmitter and infra red hearing aids are available for use during the meeting. If you require any further information or assistance, please contact the receptionist on arrival.
	<p>FIRE / EMERGENCY EVACUATION PROCEDURE</p> <p>If the fire alarm sounds continuously, or if you are instructed to do so, you must leave the building by the nearest available exit. You will be directed to the nearest exit by council staff. It is vital that you follow their instructions:</p> <ul style="list-style-type: none"> • You should proceed calmly; do not run and do not use the lifts; • Do not stop to collect personal belongings; • Once you are outside, please do not wait immediately next to the building, but move some distance away and await further instructions; and • Do not re-enter the building until told that it is safe to do so.

Democratic Services: Meeting Layout



AGENDA

61. PROCEDURAL BUSINESS

- (a) Declarations of Interest by all Members present of any personal interests in matters on the agenda, the nature of any interest and whether the Members regard the interest as prejudicial under the terms of the Code of Conduct.
- (b) Exclusion of Press and Public - To consider whether, in view of the nature of the business to be transacted, or the nature of the proceedings, the press and public should be excluded from the meeting when any of the following items are under consideration.

NOTE: Any item appearing in Part 2 of the Agenda states in its heading either that it is confidential or the category under which the information disclosed in the report is exempt from disclosure and therefore not available to the public.

A list and description of the categories of exempt information is available for public inspection at Brighton and Hove Town Halls.

62. MINUTES OF THE PREVIOUS MEETING

1 - 6

Minutes of the Meeting held on 01 December 2008 (copy attached).

63. CABINET MEMBER'S COMMUNICATIONS

64. ITEMS RESERVED FOR DISCUSSION

- (a) Items reserved by the Cabinet Member
- (b) Items reserved by the Opposition Spokesperson
- (c) Items reserved by Members, with the agreement of the Cabinet Member.

NOTE: Petitions, Public Questions, Deputations, Letters from Councillors, Written Questions from Councillors and Notices of Motion will be reserved automatically.

65. PETITIONS

No petitions received by date of publication.

CHILDREN & YOUNG PEOPLE CABINET MEMBER MEETING

66. PUBLIC QUESTIONS

(The closing date for receipt of public questions is 12 noon on 12 January 2009)

No public questions received by date of publication.

67. DEPUTATIONS

(The closing date for receipt of deputations is 12 noon on 12 January 2009)

No deputations received by date of publication.

68. LETTERS FROM COUNCILLORS

No letters have been received.

69. WRITTEN QUESTIONS FROM COUNCILLORS

7 - 8

i) **Consultation with local residents with regards to the expansion of Balfour Junior School.** Councillor Allen (copy attached).

ii) **Inflexible timetabling and routing on the part of the bus is making it difficult for children in Prestonville attending Hove Park School to take a full part in after-school activities.** Councillor Allen (copy attached).

Contact Officer: Nara Miranda

Tel: 29-1004 (Voicemail only)

Ward Affected: Preston Park; Withdean;

70. NOTICES OF MOTIONS

No Notices of Motion have been referred.

71. CONSULTATION ON THE EXTENSION OF SECONDARY SCHOOL CATCHMENT AREA FOR PATCHAM HIGH SCHOOL

9 - 30

Report of the Director of Children's Services (copy attached).

Contact Officer: Gil Sweetenham

Tel: 293433

Ward Affected: All Wards

72. PROPOSED EXPANSION OF LONGHILL SCHOOL

31 - 34

Report of the Director of Children's Services (copy attached).

Contact Officer: Gillian Churchill

Tel: 293515

Ward Affected: All Wards

CHILDREN & YOUNG PEOPLE CABINET MEMBER MEETING

73. PROPOSED EXPANSION OF DAVIGDOR INFANT SCHOOL 35 - 54

Report of the Director of Children's Services (Copy attached).

Contact Officer: Gillian Churchill Tel: 293515

Ward Affected: All Wards

74. CAPITAL RESOURCES & CAPITAL INVESTMENT PROGRAMME, 2009/2010 55 - 62

Report of the Director of Children's Services (copy attached).

Contact Officer: Gillian Churchill Tel: 293515

Ward Affected: All Wards

The City Council actively welcomes members of the public and the press to attend its meetings and holds as many of its meetings as possible in public. Provision is also made on the agendas for public questions to committees and details of how questions can be raised can be found on the website and/or on agendas for the meetings.

The closing date for receipt of public questions and deputations for the next meeting is 12 noon on the fifth working day before the meeting.

Agendas and minutes are published on the council's website www.brighton-hove.gov.uk. Agendas are available to view five working days prior to the meeting date.

Meeting papers can be provided, on request, in large print, in Braille, on audio tape or on disc, or translated into any other language as requested.

For further details and general enquiries about this meeting contact Nara Miranda, (01273 291004 (voicemail only), email nara.miranda@brighton-hove.gov.uk) or email democratic.services@brighton-hove.gov.uk

Date of Publication - Friday, 9 January 2009

CHILDREN & YOUNG PEOPLE CABINET MEMBER MEETING

Agenda Item 62

Brighton & Hove City Council

BRIGHTON & HOVE CITY COUNCIL

CHILDREN & YOUNG PEOPLE CABINET MEMBER MEETING

4.00pm, 1 DECEMBER 2008

COUNCIL CHAMBER, HOVE TOWN HALL

MINUTES

Present: Councillor Mrs Brown (Cabinet Member)

Also in attendance: Councillor Hawkes, Opposition Spokesperson

Other Members present: Councillors Duncan and Kemble

PART ONE

49. PROCEDURAL BUSINESS

49a Declarations of Interest

49.1 There were none.

49b Exclusion of Press and Public

49.2 In accordance with section 100A of the Local Government Act 1972 ('the Act'), the Cabinet Member for Children & Young People considered whether the press and public should be excluded from the meeting during an item of business on the grounds that it was likely, in view of the nature of the business to be transacted or the nature of the proceedings, that if members of the press or public were present during that item, there would be disclosure to them of confidential information (as defined in section 100A(3) of the Act) or exempt information (as defined in section 100I(1) of the Act).

49.3 **RESOLVED** – That the press and public be not excluded from the meeting.

50. MINUTES OF THE PREVIOUS MEETING

50.1 **RESOLVED** – That the minutes of the meeting held on 8 September 2008 be approved and signed by the Cabinet Member as a correct record.

51. CABINET MEMBER'S COMMUNICATIONS

51.1 There were none.

52. ITEMS RESERVED FOR DISCUSSION

52.1 **RESOLVED** - All the items were reserved for discussion by the Cabinet Member.

53. PETITIONS

53.1 There were none.

54. PUBLIC QUESTIONS

54.1 There were none.

55. DEPUTATIONS

55.1 The Cabinet Member reported that one deputation had been received. It concerned a request to oppose the proposed merger of St Luke's Infant and St Luke's Junior Schools. The Cabinet Member invited Mr P Hendrick, as the spokesperson, to come forward and address the meeting.

55.2 Mr Hendrick presented the Deputation (see Appendix 1 to the minutes).

55.3 Mr Hendrick concluded: "St Luke's Infant's and Junior's are state schools, they are great schools. Ofsted think so too. The council must take some credit for this success alongside the staff and pupils for letting them get on with their job without unnecessary change. Let's celebrate and learn from the success of these schools. Why risk all this for some uncertain and unproven gains."

55.4 The Cabinet Member invited Councillor Ben Duncan to speak in support of the deputation.

55.5 Councillor Duncan thanked those parents who attended the meeting to present the Deputation and thanked the Cabinet Member for the opportunity to speak.

55.6 Councillor Duncan echoed the sentiments expressed by the Deputation and supported their case. He stated that he recognised many of the educational advantages in merging schools; however, he did not feel this was applicable in the case of St Luke's Infant and Junior schools. Councillor Duncan urged the Cabinet Member to not authorise the merger.

55.7 The Cabinet Member invited Councillor Kemble to speak on this item.

55.8 Councillor Kemble spoke in support of the proposed merger of St Luke's Infant and Junior Schools, highlighting the fact that the amalgamation would provide a better school for the city and its children in the longer term.

55.9 The Cabinet Member thanked everyone for their contributions, in particular Mr Hendrick for attending the meeting and speaking on behalf of the Deputation.

55.10 In her response to the Deputation, the Cabinet member stated:

“As you know, the Council’s Merger Protocol states that when a head teacher of an infant or junior school leaves, the Council will consider merging the two schools. I can assure you that there is no blanket policy – all the schools are considered individually depending on the particular circumstances. As you know, some mergers go ahead and others do not.

The Council does believe there can be advantages in the creation of all-through primary schools and I will reiterate these again briefly. They are written into the report: greater continuity in teaching, pupil care and development under a single head teacher and teaching staff. The school could offer a greater range of teaching skills across the whole age range; there can be greater flexibility in deploying staff and resources and practical advantages to parents. A very positive feature of schools catering for pupils from 4-11 is the social interaction between the pupils.

These advantages are set out fully in the report. The main argument against the merger seems to be the size, but, although the proposed new school would become one of the largest primary schools in the city, this has to be considered against the fact that the two existing schools are within the same building with just one door between them. There would be little, if any, disruption as the schools currently operate from this one building and that would not change. The infant school has a separate entrance and playground from the junior school and this could continue.

There are many schools nationally that are of a similar size and larger that have outstanding results. There is absolutely no evidence to suggest that combining schools with good and outstanding Ofsted assessment would produce anything other than an extremely successful school. Both schools were praised for their caring attitude to the children in their last Ofsted inspections so I am sure that the children will remain well cared for and happy.”

55.11 **RESOLVED** – That the Deputation was considered and noted by the Cabinet Member.

56. LETTERS FROM COUNCILLORS

56.1 There were none.

57. WRITTEN QUESTIONS FROM COUNCILLORS

57.1 There were none.

58. NOTICES OF MOTION

58.1 There were none.

59. ST LUKE’S INFANT AND JUNIOR SCHOOL MERGER

59.1 The Cabinet Member considered a report of the Director of Children’s Services concerning St Luke’s Infant and Junior School merger. The report sought the agreement

to proceed to the next stage of the statutory process which was the publication of the required statutory notice (for copy see minute book).

- 59.2 The Head of Capital Strategy and Development Planning referred to paragraph 3.7 of the report and clarified that the statutory notices would be published by 12 January 2009 and not 2 December 2008, as indicated in the said paragraph.
- 59.3 She further rectified that, on paragraph 4 of Appendix 1 to the report, where it read "*The proposal is linked to the prescribed alteration set out in Part 2, to create an all through primary school with an extended age range of 3 to 11 (see part 2 of this notice)*" it should read "*The proposal is linked to the prescribed alteration set out in Part 2, to create an all through primary school with an extended age range of 4 to 11 (see part 2 of this notice)*".
- 59.4 **RESOLVED** – That, having considered the information and the reasons set out in the report, the Cabinet Member accepted the following recommendations:
- (1) That the proposal to amalgamate St Luke's Infant and Junior Schools be noted and endorsed.
 - (2) That the publication of the required Statutory Notices to progress this proposal be agreed.
 - (3) That the results from the statutory consultation process be referred to Cabinet Member Meeting on 2 March 2009 for decision.

60. EXPANSION OF BALFOUR JUNIOR SCHOOL

- 60.1 The Cabinet Member considered a report of the Director of Children's Services concerning the expansion of Balfour Junior School by one form of entry. The report sought the agreement to proceed to the next stage of the statutory process which was the publication of the required statutory notices (for copy see minute book).
- 60.2 The Opposition Spokesperson stated that she welcomed the standardisation of the forms of entry for both schools. She indicated, however, that as a result of this expansion of Balfour Junior, she had one matter of concern and that was in relation to Hertford Infant and Junior schools. She sought reassurance that careful attention would be given to Hertford schools over this process.
- 60.3 The Assistant Director, Schools, Central Area and School Support, agreed that Hertford Infant and Junior were the two nearest schools to the Balfour schools. He explained that officers were currently in conversations with the Hertford schools' governing body to find out how the schools can be best supported over this process.
- 60.4 **RESOLVED** - That, having considered the information and the reasons set out in the report, the Cabinet Member accepted the following recommendations:
- (1) That the proposal to expand Balfour Junior School by one form of entry be noted and endorsed.

- (2) That the publication of the required Statutory Notices to progress this proposal be agreed.
- (3) That the results from the statutory consultation process be referred to Cabinet Member Meeting on 2 March 2009 for decision.

The meeting concluded at 4.25pm.

Signed

Chairman

Dated this

day of

2009

CHILDREN & YOUNG PEOPLE CABINET MEMBER MEETING

Agenda Item 69

Brighton & Hove City Council

Children & Young People Cabinet Member Meeting – 19 January 2009

Note: Councillors' written questions, as detailed, will be taken as read at the meeting. The Councillor asking the question may ask one relevant supplementary question, which shall be put and answered without discussion. One other supplementary question may be asked by any other Member of the Council, which shall also be put and answered without discussion.

(A separate addendum with the written answers will be circulated at the meeting).

Questions from Councillor Allen

- i) Would Councillor Brown please explain why her department failed to ensure that local residents were consulted with regard to the proposed extension to Balfour Junior School?
- ii) Inflexible timetabling and routing on the part of the bus company is making it difficult for children in Prestonville attending Hove Park School to take a full part in after-school activities. As the children live almost three miles from school walking is not a realistic option. Would Cllr Brown please ensure that the council's transport officers negotiate seriously with the bus company over this matter?

CHILDREN & YOUNG PEOPLE CABINET MEMBER MEETING

Agenda Item 71

Brighton & Hove City Council

Subject:	Consultation on the extension of the Secondary Catchment Area for Patcham High School		
Date of Meeting:	19 January 2009		
Report of:	Director of Children's Services		
Contact Officer:	Name:	Gil Sweetenham	Tel: 29-3515
	E-mail:	Gil.sweetenham@brighton-hove.gov.uk	
Key Decision:	Yes	Forward Plan No.CYP7241	
Wards Affected:	All		

FOR GENERAL RELEASE

1. SUMMARY AND POLICY CONTEXT:

- 1.1 Following objections made to the Office of the Schools Adjudicator regarding the catchment area of Patcham High School, the Adjudicator required the Council to carry out a consultation exercise to seek the views of both parents in the local area and affected schools, regarding a possible change in the catchment area for the school. As a result of this consultation it is proposed that the Westdene and Brangwyn areas are included in the catchment area for Patcham High School, thus increasing the 'local' student body to nearer the schools admission number.
- 1.2 This would address the issues raised by objectors and recognised by the Council. It would also reduce the numbers within the Blatchington Mill and Hove Park schools catchment area. This change is also likely to increase the number of children who will be able to walk to school.
- 1.3 It is proposed that Patcham High School remains a single catchment area for the purposes of secondary admissions. The new catchment area would be bounded by Dyke Road to the west, Tongdean Lane and Surrenden Road to the South and Lewes Road to the East. The new Patcham catchment area will then include part of BN1 5, most of BN1 8 and part of BN1 9.
- 1.4 The proposal would also change the dual catchment area for Blatchington Mill and Hove Park by removing a number of BN1 5 postcodes. However, even if a change were agreed by the Council, it would not be possible to implement it for admissions in 2009 as parental preferences have already been submitted for the 2009/10 academic year. The proposal would therefore be implemented for admissions in the 2010/11 academic year.

2. RECOMMENDATIONS:

- 2.1 To note the response to the public consultation.
- 2.2 To change the Patcham High School Admissions catchment area by including the Westdene and Brangwyn areas with effect from September 2010.

2.3 That the Council explores the provision of improved pedestrian crossing of the London Road in the vicinity of the junction with Carden Avenue.

3. RELEVANT BACKGROUND INFORMATION/CHRONOLOGY OF KEY EVENTS:

3.1 On 18 July 2008 the Office of the Schools Adjudicator published a decision on an objection to the admission arrangements of Patcham High School for 2009/10

3.2 Objectors were concerned that the new admissions system, in particular the location of catchment boundaries, did not provide Patcham High School with a sustainable pupil base when compared with other parts of the city. Objectors were therefore seeking changes to the catchment boundaries to correct this anomaly.

3.3 One option that would address this issue would be an extension of the Patcham High School catchment to include the Westdene and Brangwyn areas. The adjudicator concluded that a change of the kind proposed would be possible without bringing down the whole system of secondary school admissions. He therefore agreed that parents and schools in all the areas affected should be consulted during the autumn term 2008 about this proposal. The Council took the view that the proposed change would also affect the Hove area, in which catchment Westdene/Brangwynne is currently located, and Patcham, whose catchment area would be enlarged by the proposed change. Consequently they were also included in the consultation.

3.4 If the proposal is adopted the projection of student numbers in the locality for the next four years will be as follows:

Table 1 New forecast rolls for Patcham High School, Blatchington Mill Secondary School and Hove Park Secondary School

	Admission Numbers	Forecast Rolls			
		Sep 09	Sept10	Sept 11	Sept 12
Patcham High	210	203	206	212	189
Blatchington Mill	300	274	274	280	271
Hove Park	300	274	274	280	271

(based on January 08 census and adjusted for Cardinal Newman applications Please note that this data does not take account of out of catchment area sibling links, anticipated numbers of children with exceptional circumstances, or the relative popularity of schools.)

4. CONSULTATION

4.1 Three public meetings were held as follows:

Date	Time	Venue
20 October 2008	7.30 pm	Westdene Primary School
11 November 2008	7.00 pm	Patcham High School
12 November 2008	7.00 pm	Blatchington Mill Secondary School

4.2 Consultation documents were distributed through Patcham High, Cardinal Newman, Blatchington Mill, and Hove Park schools.

4.3 Consultation documents were distributed through all primary phase schools in the Patcham and Blatchington Mill/Hove Park Secondary admissions catchment areas.

4.4 The consultation process followed this timetable:

Publication of Consultation Document 10 October 2008

Public Consultation Meetings:

Westdene Primary School 20 October 2008

Patcham High School 11 November 2008

Blatchington Mill Secondary 12 November 2008

School

Last date for responses 5 December 2008

Decision by the Cabinet Member 19 January 2009

Provisional date of Change September 2010

4.5 The consultation document is attached as Appendix 1 and an analysis of consultation responses is attached as Appendix 2.

4.6 In summary 393 responses were received of which 296 were in favour of the proposal and 97 were against the proposal.

4.7 Objections to the proposal were largely from the Westdene School area and cited the removal of parental choice from this area as the reason for their opposition.

4.8 It is evident from the public meetings and from the consultation returns that the majority of residents of the Westdene/Brangwyn area are not in favour of the proposed change. However the view was also put forward that Hove Park was a far less popular option under the current arrangements because of the home

school journey, and some saw Patcham as a viable alternative preference if they were not allocated Blatchington Mill.

- 4.9 A major concern expressed by the Westdene/Brangwyn residents was that there were no safe pedestrian crossings that pupils could use to cross the London Road if attending Patcham High. This is a key issue if the proposal were to be upheld.
- 4.10 Residents of Westdene/Brangwyn saw their area as being picked out a second time for an unwelcome change following the previous move to catchment areas. A suggestion was made that the area could be included in both the Hove and Patcham catchment areas. However this option could be seen as a precedent in the City, and could also be seen as making no realistic change to the catchment areas, as in effect Patcham was already available to those in Westdene/Brangwyn who wanted it.
- 4.11 The view from the Patcham area was that the proposed change would help to ensure that improvement continued by securing the school's financial future. Responses from the Hove area were limited but broadly in favour of the proposal
- 4.12 The benefits of the proposed change would be to secure the future development of Patcham High School and to promote local attendance for a greater number of pupils. However, this change would be against the wishes of the majority in the Westdene/Brangwyn who are directly affected.
- 4.13 In reaching a recommendation officers have been mindful of the needs of pupils across the City. On balance they take the view that this proposal will be beneficial through supporting the improvement of Patcham High School. It would also ease pressure on places in the Hove catchment area where the number of pupils is rising.

5. FINANCIAL & OTHER IMPLICATIONS:

Financial Implications:

- 5.1 Any changes to admission arrangements or patterns may impact on the numbers of pupils at individual schools and therefore individual school budget allocations which are largely driven by pupil numbers.

Finance Officer Consulted: Andy Moore, Schools Principal Accountant
Date: 17/12/2008

Legal Implications:

- 5.2 In accordance with the provisions of the School Standards and Framework Act 1998, the Council were obliged to comply with the conclusions of the School Adjudicator that it should consult on changes to the catchment area of Patcham High school for the academic year 2010/11.

Lawyer Consulted: Serena Kynaston

Date: 17/12/08

Equalities Implications:

- 5.3 Planning and provision of school places is conducted in such a way as to avoid potentially discriminatory admissions priorities or planning processes. The city

council and voluntary aided school governing bodies must be mindful of bad practice as described in the Admission Code of Practice.

Sustainability Implications:

- 5.4 Planning and provision of school places are intended, so far as it is possible, to provide pupils, parents and carers with local places where they have asked for them. This is subject to limitations in school capacity, the funding available and the priority order for capital development determined by the Council.

Crime & Disorder Implications:

- 5.5 There are no implications for the prevention of crime and disorder arising from this report.

Risk and Opportunity Management Implications:

- 5.6 There are no risk issues in terms of resources or risks to children as a result of this proposal.

Corporate / Citywide Implications:

- 5.7 All planning and provision for school places in the city should be operating on the basis of admission limits and admission priorities which have been the subject of broad consultation. The effective coordination of planning arrangements should lead to sufficient school places in all areas of the city and the removal of excess provision

6. EVALUATION OF ANY ALTERNATIVE OPTION:

- 6.1 The Alternative option is to leave the secondary admissions catchment areas as they exist pending the full review planned for 2012. This could result in budgetary problems for Patcham High School as the majority of school funding is based on the number of pupils on roll.

7. REASONS FOR REPORT RECOMMENDATIONS

- 7.1 The report addresses the issues raised by objectors and recognised by the Council. It would reduce the numbers within the Blatchington Mill and Hove Park schools catchment area. This change is also likely to increase the number of children who will be able to walk to school.

SUPPORTING DOCUMENTATION

Appendices:

1. Consultation Document
2. Summary of Consultation Responses
3. Adjudicator Consultation Overview
4. Map – Proposed new Admissions catchment area with Westdene in Patcham

Documents in Members' Rooms

1. Copies of Consultation Responses

PROPOSED CHANGE TO PATCHAM HIGH SCHOOL, BLATCHINGTON MILL SECONDARY SCHOOL AND HOVE PARK SECONDARY SCHOOL ADMISSIONS CATCHMENT AREAS

CONSULTATION DOCUMENT

Some background facts

On 18 July 2008 the Office of the Schools Adjudicator published a decision on an objection to the admission arrangements of Patcham High School for 2009/10.

Objectors were concerned that the new admissions system, in particular the location of catchment boundaries, does not provide Patcham High School with a sustainable pupil base when compared with other parts of the city.

Objectors were therefore seeking changes to the catchment boundaries to correct this anomaly.

One option that would address this issue would be an extension of the Patcham High School catchment to include the Westdene and Brangwyn areas. The adjudicator concluded that a change of the kind proposed would be possible without bringing down the whole system. He agreed that parents and schools in all the areas affected should be consulted during the autumn term about this proposal.

The current position

Patcham High School is within a single catchment area for the purposes of secondary admissions. The catchment area is bounded by London Road to the west, Surrenden Road to the South and Lewes Road to the East. The Patcham catchment area includes most of BN1 8 and part of BN1 9. The projection of student numbers in the locality for the next four years is as follows:

Table 1 – Forecast rolls for Patcham High School, Blatchington Mill Secondary School and Hove Park Secondary School

	Admission Numbers	Forecast Rolls			
		Sep 09	Sept10	Sept 11	Sept 12
Patcham High	210	161	174	166	154
Blatchington Mill	300	292	289	300	287
Hove Park	300	292	289	300	287

(based on January 08 census and adjusted for Cardinal Newman applications)

What is proposed?

It is proposed that the Westdene and Brangwyn areas are included in the Patcham Catchment Area increasing the 'local' student body to nearer the schools admission number. This would address the issues raised by objectors and recognised by the Council. It would also reduce the numbers within the

Blatchington Mill and Hove Park schools catchment area which, as shown above, are equal to the capacity of those schools. This change is also likely to increase the number of children who will be able to walk to school.

It is proposed that Patcham High School remains a single catchment area for the purposes of secondary admissions. The new catchment area would be bounded by Dyke Road to the west, Tongdean Lane and Surrenden Road to the South and Lewes Road to the East. The new Patcham catchment area will then include part of BN1 5, most of BN1 8 and part of BN1 9.

The proposal would also change the dual catchment area for Blatchington Mill and Hove Park by removing a number of BN1 5 postcodes. However, even if a change were agreed by the Council, it would not be possible to implement it for 2009, and the proposal is for implementation in 2010. If the proposal is adopted the projection of student numbers in the locality for the next four years will be as follows:

Table 2 – New forecast rolls for Patcham High School, Blatchington Mill Secondary School and Hove Park Secondary School

	Admission Numbers	Forecast Rolls			
		Sep 09	Sept10	Sept 11	Sept 12
Patcham High	210	203	206	212	189
Blatchington Mill	300	274	274	280	271
Hove Park	300	274	274	280	271

(based on January 08 census and adjusted for Cardinal Newman applications)

Consultation arrangements

If, having read this document, you would like to comment on the proposals there are several opportunities for doing so:

- You should complete and return to Kings House the reply slip included in this document.
- You can send a letter to the Assistant Director School Support and Central Area, Kings House, Grand Avenue, Hove BN23 2SR. *Please mark your letter for the attention of Gil Sweetenham*
- **Replies must be received by _____ **5 December 2008****
- You are welcome to attend the **Public Meetings** which have been arranged for:

Date	Time	Venue
20 October 2008	7.30 pm	Westdene Primary School
11 November 2008	7.00pm	Patcham High School
12 November 2008	7.00 pm	Blatchington Mill Secondary School

- At this meeting parents and others will have the opportunity to put forward their views. Officers from the Children and Young Peoples Trust will be present to clarify points of detail.

The next stage

All of the views put forward by consultees will be reported to Brighton and Hove City Council for consideration alongside officer recommendations prior to a decision being made.

The proposals set out in this document are put forward as a basis for consultation only. It is stressed that ***no decisions have yet been made*** and that none will be made until consultations have been completed and all views carefully considered by Brighton and Hove City Council.

The Council's major objective is to ensure that the outcome of this consultation has local support and is in the best interests of pupils in Brighton and Hove.

DO PLEASE LET US KNOW YOUR VIEWS

If you require any further copies of this document please request them by ringing 01273 293474 or emailing marie.chesham@brighton-hove.gov.uk

Address for returning this document:

**Gil Sweetenham
Assistant Director School Support and Central Area
Brighton & Hove City Council
Room 320, King's House, Grand Avenue
HOVE, BN3 2ZZ**

**All responses will be treated confidentially
Thank you for your assistance**

The following timetable is proposed:

Publication of Consultation Document	10 October 2008
Public Consultation Meetings:	
Westdene Primary School	20 October 2008
Patcham High School	11 November 2008
Blatchington Mill Secondary School	12 November 2008
School	
Last date for responses	5 December 2008
Decision by the Cabinet Member	19 January 2009
Provisional date of Change	September 2010

Please Note: Cabinet member meetings are held at Hove Town Hall or Brighton Town Hall. For the exact times, please contact Marie Chesham on telephone number:

01273 293474



Brighton & Hove

RESPONSE FORM

Please return no later than
5 December 2008

To: Gil Sweetenham
 Assistant Director School Support
 And Central Area
 Kings House

Tel: (01273) 293433

Fax: (01273) 293596

PROPOSED CHANGE TO PATCHAM HIGH SCHOOL, BLATCHINGTON MILL SECONDARY SCHOOL AND HOVE PARK SECONDARY SCHOOL ADMISSIONS CATCHMENT AREAS

Name

Address

(Please tick as appropriate) I am:

The parent of a pupil:
 (please state which school)

I support the proposal

A member of staff:
 (please state which school)

A school governor:
 (please state which school)

I do not support the proposal

Other interested party:
 (please state which)

My comments are as follows: *(please continue on a separate sheet if necessary)*

PATCHAM CATCHMENT AREA CONSULTATION - ANALYSIS

IN FAVOUR OF PROPOSAL - 296 respondents as at 05.12.08

Reason	Child's school	Parent	Staff	Govern	Other
Location	Blatchington Mill	1			
	Hangleton	1			
	Patcham (not specified)	1		1	
	Patcham Junior	1			
	Somerhill	2			
	Stanford Infant	2			
	Stanford Junior	3			
	Westdene	2			
	West Hove Infant	2			
	West Hove junior	1			
	n/a	1			
London Rd, busy to cross, crossing needed	Patcham High School	2		2	
	Patcham Infant	1			
	Westdene	1			
Location - Dyke Road as boundary	Hove Park	1			
Location - BN1 5 lottery system	Hove Park	1			
Overall a good school, education, happy pupils	Davigdor	1			
	Hangleton	1			
	Goldstone	1			
	Patcham Infant	4		2	
	Patcham Junior	7	2		
	Patcham High School	6	1	2	
	Westdene	3			
Should have been done earlier	Carden Primary	1			
	Patcham High School	3			1
Pupils closer to school likely to be accepted	Hangleton Infant/Junior	1			
Takes the pressure off other Schools	Patcham High School	2		3	
	St Pauls Primary	1			
	Somerhill	1			

						Appendix 2	
Reason	Child's school	Parent	Staff	Govern	Other		
	West Hove junior	1					
Good for finance	Blatchington Mill	1					
	Patcham Infant	4					
	Patcham Junior	7					
	Patcham High School	2		2	1		
	n/a	2			2		
Will free up places at Blatch. Mill and Hove	Stanford	1					
Good idea to expand, community	Patcham Infant	12		1			
local children walking to school, local friends	Cardinal Newman	1					
	Davigdor	1					
	Goldstone Primary	1					
	Goldstone Primary	1					
	Hangleton Junior	3	1		1		
	Hangleton Junior	1					
	Patcham Junior	12			1		
	Patcham High School	5	1	3			
	St Andrews Primary	1					
	St Josephs Primary	1	1				
	St Pauls Primary	2					
	Somerhill	5					
	Stanford Infant	1					
	Stanford Junior	2					
	West Blatchington primary	1					
	Westdene	2		2			
	West Hove Junior	8					
	West Hove Infant	6					
	Westdene	3					
	n/a	5	1				
Keeping schools open.	Aldrington primary	1					
Improving rather than closing failing schools	n/a	1	1				
		1					
The numbers of children should have been looked at before the decision was made	Patcham Junior	1			1		
Generally support	No detailed comments	112					
		263	8	18	7		
		TOTAL 296					

PATCHAM CATCHMENT AREA CONSULTATION - ANALYSIS

GENERAL SUPPORT BY SCHOOL for a change to the catchment area*					
Aldrington	1				
Blatchington Mill	2				
Carden Primary	1				
Cardinal Newman	1				
Davigdor Infant	2				
Goldstone Primary	3				
Hangleton Infant	3				
Hangleton Junior	4	1		1	
Hove Park	2				
Patcham High	20	2	12	2	
Patcham Infant	21		3		
Patcham Junior	28	2		1	
St Andrews	1				
St Josephs	1	1			
St Pauls	3				
Somerhill	8		1		
Standford Infant	4				
Stanford Junior	5				
West Blatchington Primary	1				
Westdene	11		2		
West Hove Infant	8				
West Hove Junior	9				
	139	6	18	4	167
* where respondent's school not specified etc. figures not included					
05.12.08	for purposes of this table				
Special notes	TOTAL 167				
More parking spaces please for drop off and pick up.					
Many commented about wasting money on a review so soon after the SAR					
and that existing catchment area was wrong.					

PATCHAM CATCHMENT AREA CONSULTATION - ANALYSIS BY REASON FOR OPPOSITION

AGAINST PROPOSAL - 97 respondents as at 05.12.08

Reason	School	Parent	Staff	Gov	Total by reasons stated
Not to traumatise children, keep children close to home, due to disability	Carden Primary School	1			1
No choice left for a parent to choose a School	n/a	4			4
	Westdene Primary	26		1	27
	Patcham Junior	1			1
Child to stay on her/his School with his friends etc	Stanford Infant	2			2
	Westdene	7			7
	n/a	2			2
Not safe for children to walk to School, crossing London Road	Westdene Primary	10			10
	n/a	4			4
	Blatchington Mill	1			1
Transport to School	Westdene Primary	5			5
Patcham is not a good School: low performing, bullying, bad language	n/a	1			1
	Westdene	3			3
Patcham will expand too much, not many pupils in other Schools	Westdene	1			1
Light Controlled crossing needed, pedestrian	Westdene Primary	3			3
	n/a	1			1
Better staff for Patcham needed	Stanford Junior	1			1
Current system is unfair	Hove Park	1			1
	Benfield			1	1
	Westdene	1			1

Reason	School	Parent	Staff	Gov	Total by reasons stated
Affect to other Schools	Portslade Community College		1		1
No reason given	not specified	9			9
	Westdene	1			1
Westdene pupils unable to continue with Blatchington Mills art activities	Westdene	2			2
Pushes parents to consider going towards private schools	Westdene Primary	2			2
For all the reasons mentioned at the School meeting	Westdene	1			1
Affects the level of education	Westdene	3			3
Reduction of a tutor group, change of a staffing structure etc	Blatchington Mill		1		1
26	Total by respondent type	93	2	2	97
		TOTAL 97			
	GENERAL OPPOSITION BY SCHOOL for a change to the catchr				
	Benfield			1	1
	Blatchington Mill	1	1		2
	Carden Primary School	1			1
	Hove Park	1			1
	Patcham Junior	1			1
	Portslade Community College		1		1
	Stanford Infant	2			2
	Stanford Junior	1			1
	Westdene	65		1	66
		TOTAL 76			
Special Notes:	Many commented about wasting money on a review so soon after the SAR				

OVERVIEW

The current position

Patcham High School is within a single catchment area for the purposes of secondary admissions. The catchment area is bounded by London Road to the west, Surrenden Road to the South and Lewes Road to the East. The Patcham catchment area includes most of BN1 8 and part of BN1 9.

The actual post codes included are as follows:

BN1 9A, BN1 9BA, BN1 9E, BN1 9G, BN1 9HT, BN1 9HU, BN1 9JS, BN1 9QB, BN1 9TN, and BN1 8 except

BN1 8PU, BN1 8PZ, BN1 8QA, BN1 8QQ, QR, QS, QT, QU, QW, QX, BN1 8XA, XB, XD, XF, XG, XH, XJ, XT, BN1 8YH

What is proposed

It is proposed that Patcham High School remains a single catchment area for the purposes of secondary admissions. The new catchment area would be bounded by Dyke Road to the west, Tongdean Lane and Surrenden Road to the South and Lewes Road to the East. The new Patcham catchment area will then include part of BN1 5, all of BN1 8 and part of BN1 9.

The actual post codes included would be:

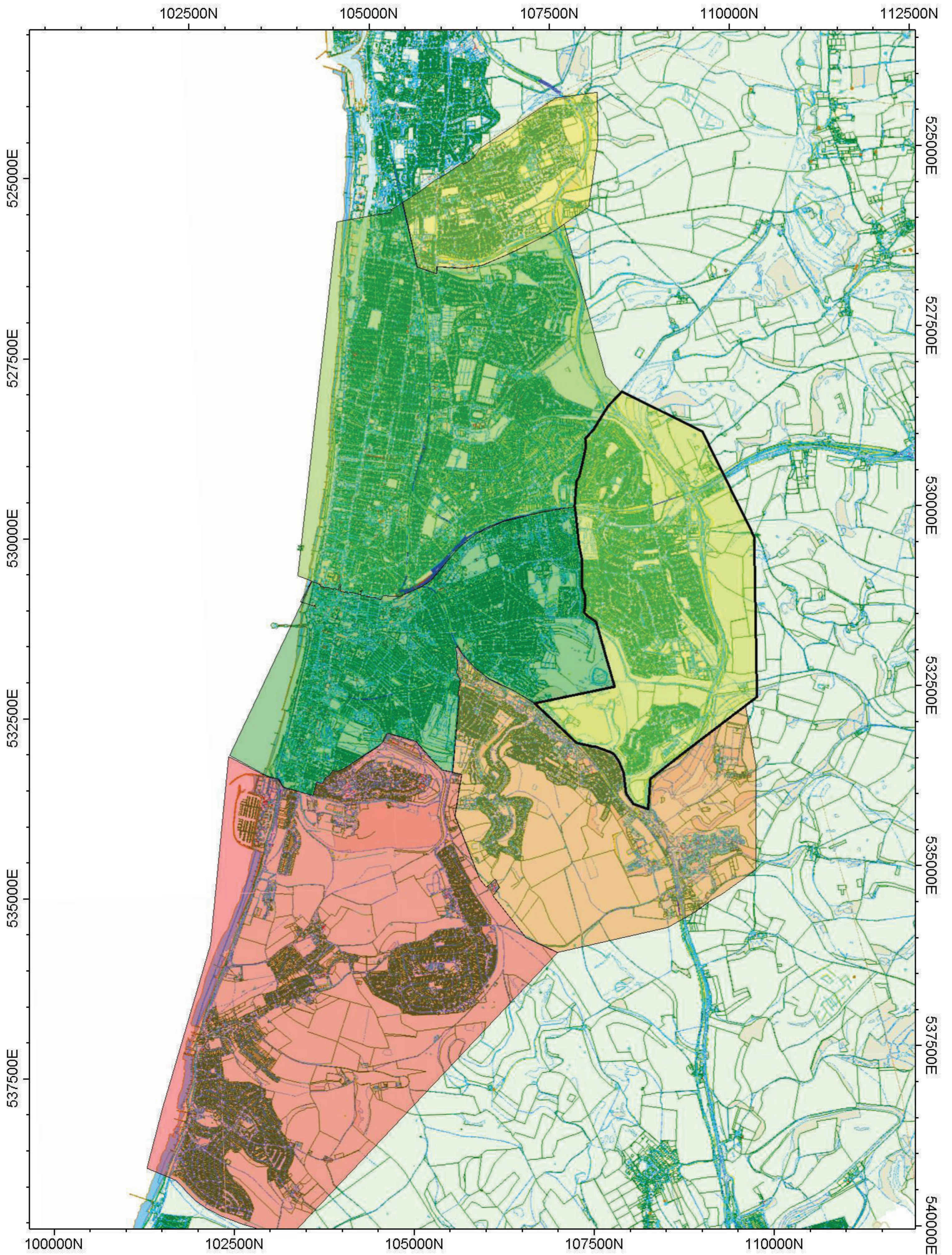
BN1 5AZ, EB, ED, EE, EF, EG, EH, EJ, EL, EN, EP, EQ, ER, ES, FA, FB, FD, FE, FF, FG, FH, FJ, FL, FN, FP, FQ, FR, GA, GB, GD, GE, GF, GG, GH, GJ, GN, GP, GQ, GR, HA, HB, HD, HE, HF, HG, HH, HJ, HL, JD (even numbers), JE (even numbers), JH, JJ, JP, JX, LF, LG, LH, LJ, LL, LN, LP, LQ, LT, LU, LY, BN1 8 and

BN1 9A, BN1 9BA, BN1 9E, BN1 9G, BN1 9HT, BN1 9HU, BN1 9JS, BN1 9QB, BN1 9TN

The proposal would also change the dual catchment area for Blatchington Mill and Hove Park by removing the following postcodes:

BN1 5AZ, EB, ED, EE, EF, EG, EH, EJ, EL, EN, EP, EQ, ER, EES, FA, FB, FD, FE, FF, FG, FH, FJ, FL, FN, FP, FQ, FR, GA, GB, GD, GE, GF, GG, GH, GJ, GN, GP, GQ, GR, HA, HB, HD, HE, HF, HG, HH, HJ, HL, JD (even numbers), JE (even numbers), JH, JJ, JP, JX, LF, LG, LH, LJ, LL, LN, LP, LQ, LT, LU, LY, BN1 8PU, PZ, QA, QQ, QR, QS, QT, QU, QW, QX, XA, XB, XD, XF, XG, XH, XJ, XT, YH

Proposed new Secondary Admissions catchment areas with Westdene in Patcham



CHILDREN & YOUNG PEOPLE CABINET MEMBER MEETING

Agenda Item 72

Brighton & Hove City Council

Subject:	Proposed Expansion of Longhill School		
Date of Meeting:	19 January 2009		
Report of:	Director of Children's Services		
Contact Officer:	Name:	Gillian Churchill	Tel: 29-3515
	E-mail:	gillian.churchill@brighton-hove.gov.uk	
Key Decision:	Yes	Forward Plan No. CYP7243	
Wards Affected:	All		

FOR GENERAL RELEASE

1. SUMMARY AND POLICY CONTEXT:

- 1.1 As part of the Council's future development of schools within the city it is proposed to expand Longhill School by one form of entry and to carry out the necessary adaptations to the building to facilitate this expansion.
- 1.2 The purpose of this report is to set out the background and rationale for this proposed expansion and to seek Cabinet Member endorsement to proceeding to the first stage of the statutory process, which is the initial consultation period required by the Education and Inspections Act 2006.

2. RECOMMENDATIONS:

- 2.1 To note and endorse the proposal to expand Longhill School by one form of entry.
- 2.2 To agree to the initial consultation with the staff, parents and carers and pupils of the school and any other interested party.
- 2.3 That the results from the initial consultation process is referred to Cabinet Member Meeting in March 2009.

3. RELEVANT BACKGROUND INFORMATION/CHRONOLOGY OF KEY EVENTS:

- 3.1 Brighton & Hove has been experiencing a rise in the number of children registered with GP's across the city for the last 5 years. This is already having an impact in the number of school places needed in primary schools and will start to impact in the secondary sector in the future.
- 3.2 In addition to this there has been a number of planning applications granted in recent years for developments of considerable size at Brighton Marina and Saltdean.

- 3.3 This has led us to look closely at the provision of secondary places across the city and particularly in the east of the city in the area of Longhill School.
- 3.4 Providing an additional form of entry at Longhill School from September 2010 will address the issues that could be raised by the increase in pupil numbers as a result of the increasing birth rate and the possible developments locally. It would also reduce the projected future pressure in the Dorothy Stringer and Varndean secondary admissions catchment area.
- 3.5 Consequently it is recommended that Longhill School is permanently expanded by one form of entry from September 2010. This would increase its published admission number to 270.
- 3.6 To enable the school to accommodate the additional pupils it will be necessary to provide additional accommodation at the school. The extent and nature of this accommodation is being discussed with the school. The discussions are being held following the completion of a detailed curriculum analysis and suitability survey of the school and discussion with the head teacher.
- 3.7 The curriculum analysis has shown that in addition to enhanced dining facilities and toilets the school will require additional general teaching spaces. It is proposed that the additional accommodation will be provided in a mix of new build and some internal remodelling.
- 3.8 One of the initial issues raised by the head teacher is the suitability of the dining accommodation which is inadequate even for a school of its current size. This situation has arisen as the school has expanded over time without consideration being given to facilities such as the dining accommodation.
- 3.9 The Education and Inspections Act 2006 sets out the process for making prescribed changes to maintained schools and this includes expanding a school by more than 27 pupils. The first stage of this process is to carry out an initial stage of consultation with all interested parties. It is proposed that this initial consultation is carried out in time for the results to be reported to The Cabinet Member Meeting in March 2009.

4. CONSULTATION

- 4.1 Secondary heads were consulted regarding this proposal at their meeting on 12 November 2008 and comments invited through a follow-up e-mail sent to all secondary schools on 24 November.
- 4.2 To progress further there is a need to consult publicly as part of statutory process under Education and Inspections Act 2006
- 4.3 The school will also consult with the community on the form of building prior to making planning application. These consultations are seen as part of the planning process.

5. FINANCIAL & OTHER IMPLICATIONS:

Financial Implications:

- 5.1 The scheme is to be funded from Targeted Capital Fund (TCF) in 2009/10 and 2010/11 plus funding from the school in the form of Devolved Formula Capital (DFC). Other capital funding may be made available to this project and used as appropriate, however this will come from within existing capital budgets.

Finance Officer Consulted: Andy Moore – Schools Principal Accountant – CYPT
Finance Date: 09/12/08

Legal Implications:

- 5.2 In order to achieve the proposed expansion the Council will need to follow the statutory procedures set out in the Education and Inspections Act 2006 and associated Regulations and Guidance issued by the DCSF. At this stage of the process the Council is required to consult 'all interested parties' on the proposals. The results of the consultation process will then be brought back to Cabinet in March 2009 for a decision whether to proceed to the next stage of the statutory process i.e. the publication of Statutory Notices.

Lawyer Consulted: Serena Kynaston Date: 09/12/08

Equalities Implications:

- 5.3 Planning and provision of school places is conducted in such a way as to avoid potentially discriminatory admissions priorities or planning processes. The city council and voluntary aided school governing bodies must be mindful of bad practice as described in the Admission Code of Practice.

Sustainability Implications:

- 5.4 Planning and provision of school places are intended, so far as it is possible, to provide pupils, parents and carers with local places where they have asked for them. This is subject to limitations in school capacity, the funding available and the priority order for capital development determined by the Council.

Crime & Disorder Implications:

- 5.5 There are no implications for the prevention of crime and disorder arising from this report.

Risk and Opportunity Management Implications:

- 5.6 There are no risk issues in terms of resources or risks to children as a result of this proposal

Corporate / Citywide Implications:

- 5.7 All planning and provision for school places in the city should be operating on the basis of admission limits and admission priorities which have been the subject of broad consultation. The effective coordination of the planning arrangements should lead to sufficient school places in all areas of the city and the removal of excess provision

6. EVALUATION OF ANY ALTERNATIVE OPTION(S):

- 6.1 The alternative option is to leave the school as at present.
- 6.2 The concern regarding the adequacy of school places would remain.
- 6.3 The school would struggle to improve school meal take up and quality of food offered.

7. REASONS FOR REPORT RECOMMENDATIONS

- 7.1 Investment in the school is essential to ensure the school continues to improve.

SUPPORTING DOCUMENTATION

Appendices:

- 1. None

Documents in Members' Rooms

- 1. None

Background Documents

- 1. None

CHILDREN & YOUNG PEOPLE CABINET MEMBER MEETING

Agenda Item 73

Brighton & Hove City Council

Subject: Proposed Expansion of Davigdor Infant School
Date of Meeting: 19 January 2009
Report of: Director of Children's Services
Contact Officer: Name: Gillian Churchill Tel: 29-3515
E-mail: gillian.churchill@brighton-hove.gov.uk
Key Decision: Yes Forward Plan No. CYP7245
Wards Affected: All

FOR GENERAL RELEASE

1. SUMMARY AND POLICY CONTEXT:

- 1.1 As part of the Council's future development of Schools within the city it is proposed to expand Davigdor Infant School by one form of entry.
- 1.2 The purpose of this report is to set out the background and rationale for this proposed expansion and to seek Cabinet Member endorsement to proceeding to the next stage of the statutory process, which is the publication of the required Statutory Notices.

2. RECOMMENDATIONS:

- 2.1 To note and endorse the proposal to expand Davigdor Infant School by one form of entry.
- 2.2 To agree to the publication of the required Statutory Notices to progress this proposal.
- 2.3 That the results from the statutory consultation process are referred to Cabinet Member Meeting in June / July 2009 for decision.

3. RELEVANT BACKGROUND INFORMATION/CHRONOLOGY OF KEY EVENTS:

- 3.1 Brighton and Hove City Council has a legal requirement to provide sufficient school places for all school age children in the city. School places should be provided in such a way that parents and pupils can access a local school wherever possible.

- 3.2 Over recent years there has been a considerable increase in the number of children growing up in the part of the city that is served by Davigdor Infant School. This is evidenced by the fact that the council had to temporarily increase the size of the school by one form of entry for September 2008 and 2009.
- 3.3 The proposal is to now expand the infant school so that it permanently becomes a four form entry school with a yearly intake of 120.
- 3.4 To support the expansion of the school there will be an extension of the school premises that will be funded by a combination of the Primary Capital Programme funding, the schools Devolved Formula Capital and other council capital funding. This extension will provide additional classrooms to accommodate the extra pupils. There will also be some internal remodelling and refurbishment to provide accommodation that will better fit the needs of current teaching and learning and the delivery of a broad and balanced curriculum.
- 3.5 The governing body of the infant school has been consulted as has the governing body of the adjacent Somerhill Junior School. This proposal is linked to a proposal to expand Somerhill Junior School by one form of entry in September 2011.
- 3.6 The views of the governing bodies will be finalised in light of the consultation, Governors will hold a special meeting at the end of the consultation period to determine their final views on the proposal.
- 3.7 In proposing the expansion of Davigdor Infant School the following programme is to be followed.

Publication of Consultation Document	3 October 2008
Public Consultation Meeting	4 November 2008
Last date for responses	21 November 2008
Report back to Cabinet Member Meeting	19 Jan 2009
Issue Public Notice	1 May 2009
End of public notice period	29 th May 2009
Decision by the Cabinet Member Meeting	June / July 2009
Provisional Opening	1 September 2010

- 3.8 In order to achieve the opening date of the proposed expanded school in September 2010 the statutory notices must be published on 1st May 2009. The timetable will then allow full analysis of responses to the notice to be

prepared and presented to the Cabinet Member Meeting in June / July 2009. The report to that meeting will seek the final decision on the proposal.

- 3.9 The reason for the delay in publishing the Statutory Notice following this decision is that the Statutory Notice for this proposal will only be published if it is also agreed to proceed with the proposal to expand Somerhill Junior School. The Somerhill Junior School Proposal is following a slightly different timetable and it is not anticipated that we will know the outcome of the first stage of consultation on this until Easter 2009.
- 3.9 A copy of the draft statutory notice is attached to this report at Appendix 1.

4. CONSULTATION

- 4.1 Following the key decision taken by the Director of Children's Services and the CYPT Cabinet Member on 21st July 2008 to commence public consultation a document outlining the amalgamation process was issued to governors, staff, pupils and parents and carers of Davigdor Infant School and copies were made available to any other interested parties. This consultation document is attached as Appendix 2 to this report.
- 4.2 As part of the public consultation process a public meeting was held on 4th November 2008. This meeting gave parents and carers, governors and others the opportunity to put forward their views.
- 4.3 This initial stage of the consultation came to a close on 21st November 2008. The responses to this consultation exercise have been collated and analysed and are shown at Appendix 3 to this report.
- 4.4 In summary 14 responses were received of which 3 were in favour of the proposal and 11 were against the proposal.
- 4.5 Those against the proposal were concerned that there was insufficient outside play space for an expanded school, that the school would be too large at four forms of entry, that the building work would disrupt the pupils in the school, that there is no appropriately sized secondary school in the area, that a new school is needed in the area and issues relating to road safety.
- 4.6 Analysis of existing pupil placements suggests that those who do not achieve a place at Davigdor Infant School are allocated places across a range of other schools right across the city. The Council believes that there will be no negative impact on other local primary schools as a result of this proposal. It is anticipated that the present trend of rising primary aged pupil numbers in the city combined with potential new developments will mean that further additional places will be required in this part of the city even if this proposal is implemented.
- 4.7 The mix of pupils in primary schools generally reflect their local communities hence there is generally a narrower variation of social mix than that found within secondary school cohorts. The DCSF particularly supports the expansion of popular and successful schools where possible to better provide for parental preferences.

- 4.8 Regarding the argument that there is no need for an increase in places within the City, this year has seen an increase in infant place provision to accommodate a significant rise in numbers within the Hove area. These have been temporary provisions prior to proposed permanent expansion and a desired new primary school in Hove.
- 4.9 The funding for the proposed expansion is from a combination of the Primary Capital Programme funding, the schools Devolved Formula Capital and other Council capital funding. The Primary Capital Programme will provide significant funding for a large number of primary schools within the city over the next fourteen years and enables the Council to address the practicalities of school place planning and parental wishes. The proposal to expand Davigdor Infant School forms part of the wider strategy for providing school places across the City.

5. FINANCIAL & OTHER IMPLICATIONS:

- 5.1 Any implications for funding the additional floor area at Davigdor Infant School will be met from the Individual School Budget (ISB), which may increase as a result of any additional pupils into the Authority as a result of the expansion. If no additional pupils come into the Authority then the additional funding Davigdor Infant School will receive will come from within the existing ISB. Any capital costs arising from the proposal would have to be met from within the existing Education Capital Programme which includes streams such as the Primary Capital Programme, NDS modernisation and a contribution from the schools Devolved Formula Capital (DFC).

Finance Officer Consulted: Andy Moore

Date: 09/12/08

Legal Implications:

- 5.2 In order to achieve the proposed expansion statutory notices will need to be published in accordance with the Education and Inspections Act 2006 and associated regulations. There will then follow a period of 4 weeks within in which any person may make comment or objection to the proposal.

At the end of the publication period for the notice a decision will have to be made within 2 months of the end of the publication period.

Layer Consulted: Serena Kynaston

Date: 07/11/08

Equalities Implications:

- 5.3 Planning and provision of school places is conducted in such a way as to avoid potentially discriminatory admissions priorities or planning processes. The city council and voluntary aided school governing bodies must be mindful of bad practice as described in the Admission Code of Practice.

Sustainability Implications:

- 5.4 Planning and provision of school places are intended, so far as it is possible, to provide pupils, parents and carers with local places where they have asked for them. This is subject to limitations in school capacity, the funding available and the priority order for capital development determined by the Council.

Crime & Disorder Implications:

There are no implications for the prevention of crime and disorder arising from this report.

Risk and Opportunity Management Implications:

- 5.6 There are no risk issues in terms of resources or risks to children as a result of this proposal.

Corporate / Citywide Implications:

- 5.7 All planning and provision for school places in the city should be operating on the basis of admission limits and admission priorities which have been the subject of broad consultation. The effective coordination of planning arrangements should lead to sufficient school places in all areas of the city and the removal of excess provision.

6. EVALUATION OF ANY ALTERNATIVE OPTION(S):

- 6.1 The alternative option is to leave the school as a three form entry school.

7. REASONS FOR REPORT RECOMMENDATIONS

- 7.1 Brighton and Hove City Council has a legal requirement to provide sufficient school places for all school age children in the city. School places should be provided in such a way that parents and pupils can access a local school wherever possible. This proposal will provide additional places where they are wanted by parents and carers.
- 7.2 The views of the parents and carers, staff, governors and pupils of the school expressed during the consultation have been considered.

SUPPORTING DOCUMENTATION

Appendices:

1. Draft Statutory Notice
2. Consultation document for the proposed expansion
3. Responses to the consultation exercise.

Documents In Members' Rooms

1. Consultation responses

Background Documents

1. None

Brighton & Hove City Council

Statutory Notice: Expansion of Davigdor Infant School Brighton by one form of entry

Notice is given in accordance with section 19(1) of the Education and Inspections Act 2006 that Brighton & Hove City Council intends to make a prescribed alteration to Davigdor Community Infant School Somerhill Road Hove BN3 1RG from 01 September 2010.

Brighton & Hove propose to permanently expand Davigdor Infant School by one form of entry from 1st September 2010.

The current capacity of the school is 270 and the proposed capacity will be 360. The current number of pupils registered at the school is 300. The current admission number for the school is 90 and the proposed admission number will be 120.

This Notice is an extract from the complete proposal. Copies of the complete proposal can be obtained from: Gil Sweetenham, Assistant Director – Central Area and Schools Support, Brighton & Hove City Council, King's House, Grand Avenue, Hove, BN3 2SU Telephone 01273 293474.

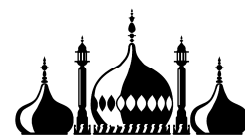
Within four weeks from the date of publication of these proposals, any person may object to or make comments on the proposal by sending them to Ms D Smith, Director of Children's Services, Brighton and Hove City Council, Kings House, Grand Avenue, Hove, BN3 2SU.

Signed: Di Smith, Director of Children's Services

Publication Date:

Explanatory Notes

This proposal is to expand Davigdor Infant School to a four form entry infant school. It is also proposed to expand the adjacent Somerhill Junior School by one form of entry which will mean that both schools remain the same size. The two proposals are linked consequently one notice will not take effect without the other.



Brighton & Hove



Brighton & Hove

CONSULTATION DOCUMENT

PROPOSED EXPANSION OF DAVIGDOR INFANT SCHOOL TO FOUR FORMS OF ENTRY FROM SEPTEMBER 2010

- inviting you to have your say -

Why are we consulting you?

This document is published by Brighton and Hove City Council and is intended as a basis for consultation with governors, staff, pupils, parents and other interested groups about a proposal to expand Davigdor Infant School to four forms of entry.

This document sets out the reasons for the proposal, identifies the issues for consideration and explains the arrangements for consultation. At the end you will find details of a public meeting to which you are invited and a reply slip for you to let us know what you think. There is also some information about what happens after consultation.

Some background facts

Brighton and Hove City Council has a legal requirement to provide sufficient school places for all school age children in the city. School places should be provided in such a way that parents and pupils can access a local school wherever possible.

The current position

Davigdor Infant school is a highly successful and popular school in Somerhill Road in the heart of Hove immediately adjacent to Somerhill Junior School. It caters for children primarily living in the BN3 1, BN3 2 and BN3 3 postcode areas of the city. Apart from Somerhill Junior School the nearest community primary phase schools to the east are Stanford Infant and Junior Schools and to the west are West Hove Infant and Junior Schools. Also to the west is St Andrews, a Voluntary Aided Church of England Primary school.

Over the last few years there has been year on year growth in the number of pre-school age children registered with General Practice (GP) Surgeries in the city. This increase seems particularly acute in the area of the city served by Davigdor Infant School. It is anticipated that this situation is going to continue. Information on GP registration data shows that the number of children

registered in this part of the city has increased from 150 in 1999 / 2000 to 350 in 2006/2007.

It is recognised that not all of these children will enter the maintained education sector, some will opt to attend church schools or private school, it is also recognised that parents of pre school age children tend to be most geographically mobile in the first four years of a child's life. However even taking these figures into account the increase in the number of pre school age children in this part of the city is significant.

The Council has a statutory duty to provide a maintained school place for any child that wants one. We are committed to working with schools to make them centres for community learning, and supporting them in meeting the wider needs of the community by engaging social services, health, the police, and the voluntary sector. For this to be successful it is important that children can access a primary school that is local to their home.

What is proposed?

The proposal is to expand Davigdor Infant school to a four form entry school with a yearly intake of 120, an increase of 30 places per year. This will formalise the temporary increase in numbers that occurred this year.

To support the expansion of the school there will be an extension of the school premises that will be funded by a combination of the Primary Capital Programme funding, the schools Devolved Formula Capital and other council capital funding. This extension will provide additional classrooms to accommodate the extra pupils. There will also be some internal remodelling and refurbishment to provide accommodation that will better fit the needs of current teaching and learning and the delivery of a broad and balanced curriculum.

What might be the advantages of expanding the school to four forms of entry?

Expanding the school by one form of entry (an additional 30 places each year) will ensure that more families can access their local school. This means that children will be able to attend school with friends that they have made prior to starting school, parent will not have to travel long distances to deliver their children to school and extended services offered by the school can be tailored to meet the needs of the whole community.

What might be the disadvantages of expanding the school to four forms of entry?

A concern often put forward regarding expansion is that larger schools can be more stressful for the pupils and that staff will not be able to get to know every pupil. Parents are often concerned that the educational outcomes for their children will not be as good in a larger school. Brighton & Hove currently has four infant schools that are four form entry schools (the size now proposed for

Davigdor Infant School), three of these schools have been graded as outstanding in their most recent Ofsted inspections. The fourth school has been graded as good and is expected to achieve outstanding at their next inspection. This suggests that outcomes for children are not necessarily affected by the physical size of the school.

Views of the Governing Bodies

The governing body of Davigdor Infant School has been consulted prior to taking the decision to hold a public consultation. The initial view of the governing body was that providing an additional form of entry at the infant school was a proposal that would benefit the parents and pupils of the community served by the school.

The Governing body of Somerhill Junior School has also been consulted regarding the proposal to expand the infant school; they have also been consulted on a proposal to expand the junior school to four forms of entry. This consultation is continuing

The views of the governing bodies will be finalised in light of the consultation results.

Consultation arrangements

If, having read this document, you would like to comment on the proposals, there are several opportunities for doing so:

- You should complete and return (either to the school or Kings House) the reply slip included in this document.
- You can send a letter to the Assistant Director Central Area and School Support, Kings House, Grand Avenue, Hove BN23 2SR. *Please mark your letter for the attention of Gil Sweetenham*
- In the interests of economy, letters will not be acknowledged or responded to.

- **Replies must be received by 21 November 2008**

- You are welcome to attend the **Public Meeting** which has been arranged for:

Date: 4 November 2008

Time: 7pm

Venue: Davigdor Infant School

- At this meeting parents and others will have the opportunity to put forward their views. Officers from the Children and Young Peoples Trust will be present to clarify points of detail.

The next stage

All of the views put forward during the consultation stage will be reported to the Cabinet Member for the Children and Young Peoples Trust. This will allow an informed decision to be made regarding progression to the next stage in the process.

If it is decided to move ahead with the proposal the next stage is the issuing of a Statutory Notice detailing the proposal. The notice will be in force for a period of six weeks during which time objections to and comments on the proposal may be made by any person or group. Details of how to make an objection or comment will be incorporated within the Statutory Notice.

The Council is empowered to make the decision on whether to implement the proposal contained in the Statutory Notice but in doing so has to take account of guidance issued by the Department of Children Schools and Families. Any comments or objections have to be considered as part of the decision making process. The Final decision regarding this proposed change will be made by the Cabinet Member for the Children and Young Peoples Trust.

The proposals set out in this document are put forward as a basis for consultation only. It is stressed that ***no decisions have yet been made*** and that none will be made until consultations have been completed and all views carefully considered by Brighton and Hove City Council.

The Children and Young Peoples Trust major objective is to ensure the outcome of this consultation has local support and is in the best interests of pupils in Brighton and Hove.

DO PLEASE LET US KNOW YOUR VIEWS

Gil Sweetenham

Assistant Director, Central Area and School Support
Brighton and Hove Council 01273 293433

Table 1 – Current and forecast rolls for Davigdor Infant School and surrounding schools

		Forecast Rolls assuming proposal implemented						
		Capacity Range	Admission Numbers	Spring 08	Jan 09	Jan10	Jan 11	Jan 12
Davigdor School	Infant	243-270	120	270	300	330	360	360
Stanford School	Infant	243-270	90	270	269	269	270	270
West Hove School	Infant	291-324	120	359	358	360	360	360
Somerhill School	Junior	318-354	96	381	379	379	384	384
Stanford School	Junior	314-349	93	364	362	370	372	372
West Hove School	Junior	432-480	128	493	495	492	500	500

If you require any further copies of this document please request them by ringing 01273 293474 or emailing marie.chesham@brighton-hove.gov.uk

Address for this returning this document:
Marie Chesham Brighton & Hove City Council
Room 320, King's House, Grand Avenue
HOVE, BN3 2ZZ

Please return by **21 November 2008**

All responses will be treated confidentially
Thank you for your assistance in our review

The following timetable is proposed:

Publication of Consultation Document	3 October 2008
Public Consultation Meeting	4 November 2008
Last date for responses	21 November 2008
Report back to Cabinet Member for the Children and Young Peoples Trust	19 Jan 2009
Issue Public Notice	1 May 2009
End of public notice period	15 June 2009
Decision by the Cabinet Member for Children and Young Peoples Trust	June / July 2009
Provisional Opening	1 September 2010

The Councillors for the area are:

Goldsmid	Ayas Fallon-Khan, Paul Lainchbury, Melanie Davis
Brunswick and Adelaide	Paul Elgood, David Watkins
Central Hove	Jan Young, Averil Older

Please Note: Apart from the public meeting on 4 November 2008 which will be held at the school, all other meetings are held at Hove Town Hall or Brighton Town Hall. For the exact times, please contact Marie Chesham on telephone number:

01273 293474

RESPONSE FORM

Please return no later than
21 November 2008

To: Gil Sweetenham
Assistant Director Central Area
And School Support
Kings House

Tel: (01273) 293433

Fax: (01273) 293596

Proposed Expansion of Davigdor Infant School by one form of Entry

Name

Address

(Please tick as appropriate) I am:

The parent of a pupil:

I support the proposal

A member of staff:

A school governor:

I do not support the proposal

(please state which school)

Other interested party:

(please state which)

My comments are as follows: *(please continue on a separate sheet if necessary)*

PROPOSED DAVIGDOR EXPANSION CONSULTATION - ANALYSIS

SUPPORTING THE PROPOSAL

Reason	School	Name of the area they support	Parent	Staff	Govern.	Other
Worried that the 4th form entry will not continue	Davigdor Infant		1			
Children able to access schooling where they live	n/a	n/a	1			
Generally support, but number of concerns (see the letter)	Davigdor Infant				1	
TOTAL			2		1	

PROPOSED DAVIGDOR EXPANSION CONSULTATION - ANALYSIS

AGAINST THE PROPOSAL

Reason	School	Do not support	Parent	Staff	Govern.	Other
Do not understand how the proposal will work 4 classes per year is too much,	Davigdor Infant	n/a	1			
bigger playgrounds needed, lack of space	n/a	Davigdor Infant	2	3		
Building work affecting children and their education	n/a	Davigdor Infant	1			
No local appropriately sized Secondary School	n/a	Davigdor Infant	2			
Expanding causes parking problems, not safe for children	n/a	Davigdor Infant				1
The area is expanding, new schools needed	n/a	n/a	1			
		TOTAL	7	3		1

- 3.2 The strategy included the pooling of all non-scheme specific capital resources that would be allocated to corporate priority areas of investment, taking into account the formula allocations included within the Single Capital Pot. (Education, Housing, Personal Social Services and Transport .
- 3.3 For 2009/2010 it is proposed to allocate capital resources to the level of the Government's Supported Capital Expenditure plus their scheme specific resources subject to the Council's overall financial position which will be determined at Cabinet on 12 February 2009. These resources may be supplemented with additional revenue contributions from individual service revenue budgets.

Capital Finance Settlement

- 3.4 In October 2007, the Government announced the three-year capital allocations up to 2010 /2011. This included the capital expenditure relating to this service for the next financial year.
- 3.5 The table below shows a comparison between next year's settlement and the amount of resources allocated in 2008/09 for this service.

	2008/2009 Settlement £'000	2009/2010 Settlement £'000	Difference £'000
Supported Borrowing	3,002	2,348	- 654
Capital Grant	2,935	8,882	+ 5,947
Total	5,937	11,230	+ 5,293

- 3.6 This table only includes funding allocated for building related work. It does not include budgets managed by others.
- 3.7 The figures above need some further explanation since there has been a further change in the allocation of Capital Grant and Supported Borrowing. For the 2008/2009 year all funding other than Devolved formula capital was made available as Supported Borrowing. For 2009/10 the NDS Modernisation allocation is split between Supported Borrowing (41%) and Capital Grant (59%) whilst new Capital Grant funding of £2.0m Targeted Capital Fund and £3.075m Primary Capital Programme have increased the funding from grant significantly. The overall level of capital funding available for expenditure on school buildings from the Government has **increased** this year by £5.293m, this is mostly as a result of the allocations received under the Primary Capital Programme and the Targeted Capital Fund.
- 3.8 Supported Borrowing, unlike Capital Grant, requires financing costs to be met from the council's revenue budget. The cost to be borne by the council for financing £2.348m borrowing is £202,600 within the first full year.

- 3.9 Additional grant funding may be made available to the Department throughout the forthcoming financial year.

Capital Resources

- 3.10 The level of projected resources must finance all capital payments in 2009/2010 including existing approved schemes, new schemes and future year commitments. A summary of the resources available to finance these payments is shown in the table below.

	Educatio n Buildings £000	Other Services £000	Total £000
Supported Borrowing	2,348	43	2,391
Capital Grant	8,882	3,509	12,391
Total Government Support	11,230	3,552	14,782
Revenue Contribution	920		920
Total Capital Resources	12,150	3,552	15,702

- 3.11 Note; The figures above include all capital budgets for 2009 /2010 for completeness, where as the figures in para 3.5 include only those budgets directly related to building fabric.
- 3.12 In addition to the resources identified above, the Department for Children, Schools and Families will allocate funding for expenditure at voluntary aided schools in Brighton & Hove under several programme headings.

Capital Investment Programme

- 3.13 A recommended Capital Investment Programme for 2009/2010 together with the impact in future years, by project, is shown in Appendix 1 to this report.
- 3.14 Capital slippage arising from the 2008/2009 capital programme will be incorporated into the 2009/2010 programme when the capital accounts are closed in May 2009 and will be funded from existing resources carried forward.
- 3.15 Under Financial Regulations, all new schemes require a detailed report to be submitted to Cabinet for final approval prior to their commencement. This ensures that Members have the opportunity to assess the outputs of individual projects against their strategic priorities and to ensure that all the legal, financial and cross-service implications are fully considered

4. CONSULTATION

N/A

5. FINANCIAL & OTHER IMPLICATIONS:

Financial Implications:

- 5.1 The report set outs the allocation of capital resources that were announced as part of the capital finance settlement in October 2007. The revenue implications of any schemes will be met from existing education budgets.

Finance Officer Consulted: Rob Allen, Strategic Finance

Date 08/12/08

Legal Implications:

- 5.2 There are no direct legal implications arising from this report. Individual projects may give rise to specific issues which will be covered by the individual reports referring to them

Layer Consulted: Serena Kynaston

Date: 10/12/08

Equalities Implications:

- 5.3 The equality implications of individual schemes included within the Capital Investment Programme are reported to Members when the detailed report is submitted to Policy and Resources Committee for final approval. The detailed planning of projects at educational establishments will take account of the implications of Brighton & Hove's policies in relation to equality of access to learning.

Sustainability Implications:

- 5.4 There are no direct environmental implications arising from this report. The environmental impact of individual schemes are reported to Members when the detailed report is submitted to Policy and Resources Committee for final approval. The detailed planning of projects at educational establishments will take account of the implications of Brighton & Hove's policies in relation to Local Agenda 21 and sustainability issues generally

Crime & Disorder Implications:

- 5.5 The prevention of crime and disorder implications of individual schemes included within the Capital Investment Programme are reported separately to Members when the detailed report is submitted to Policy and Resources Committee for final approval. The detailed planning of projects will take account of security issues

Risk and Opportunity Management Implications:

- 5.6 N/A

Corporate / Citywide Implications:

- 5.7 The NDS funding identified in this report is evidence of the Governments continuing support, via the New Deals for Schools, for the Council's work as a Local Education Authority

6. EVALUATION OF ANY ALTERNATIVE OPTION(S):

- 6.1 The only option available would be not to take up the supported borrowings approvals. This is not recommended as it would limit our ability to maintain, modernise and improve our school buildings property portfolio.

7. REASONS FOR REPORT RECOMMENDATIONS

- 7.1 The proposed capital Investment programme will enable us to work towards meeting the aims of the Primary Strategy for Change. It will also enable us to continue to ensure that we provide school places in areas of the city where they are required.

SUPPORTING DOCUMENTATION

Appendices:

1. Capital Investment Programme for 2009/2010

Documents In Members' Rooms

1. None

Background Documents

1. None

Appendix 1

CAPITAL INVESTMENT PROGRAMME 2009/10

Children & Young Peoples Trust

Capital Scheme	2009/10	2010/11	Total Scheme Cost
	£000	£000	£000
New Schemes			
Basic Need	669	669	1,338
Modernisation Allocation	2,234	2,305	4,539
Primary Capital Programme (PCP)	3,075	5,453	8,528
Devolved Capital	2,885	2,885	5,770
Structural Maintenance	920	920	1,840
Schools Access Initiative	367	367	734
Targeted Capital Fund	2,000	6,000	8,000
TOTAL INVESTMENT IN BUILDINGS	12,150	18,599	30,749
Surestart, Early Years & Childcare *	2,104	1,602	3,706
Extended Schools *	354	183	537
Harnessing Technology Grant *	616	662	1,278
Short Breaks for Disabled Children *	313		313
Youth Capital Fund *	122	122	244
Childrens Social Services *	43	44	87
TOTAL FOR SERVICE	15,702	21,212	36,914

* These budgets are managed by other sections.

They are referred to in this appendix for completeness but they are not commented upon in this report. They will be reported to Cabinet in due course.

